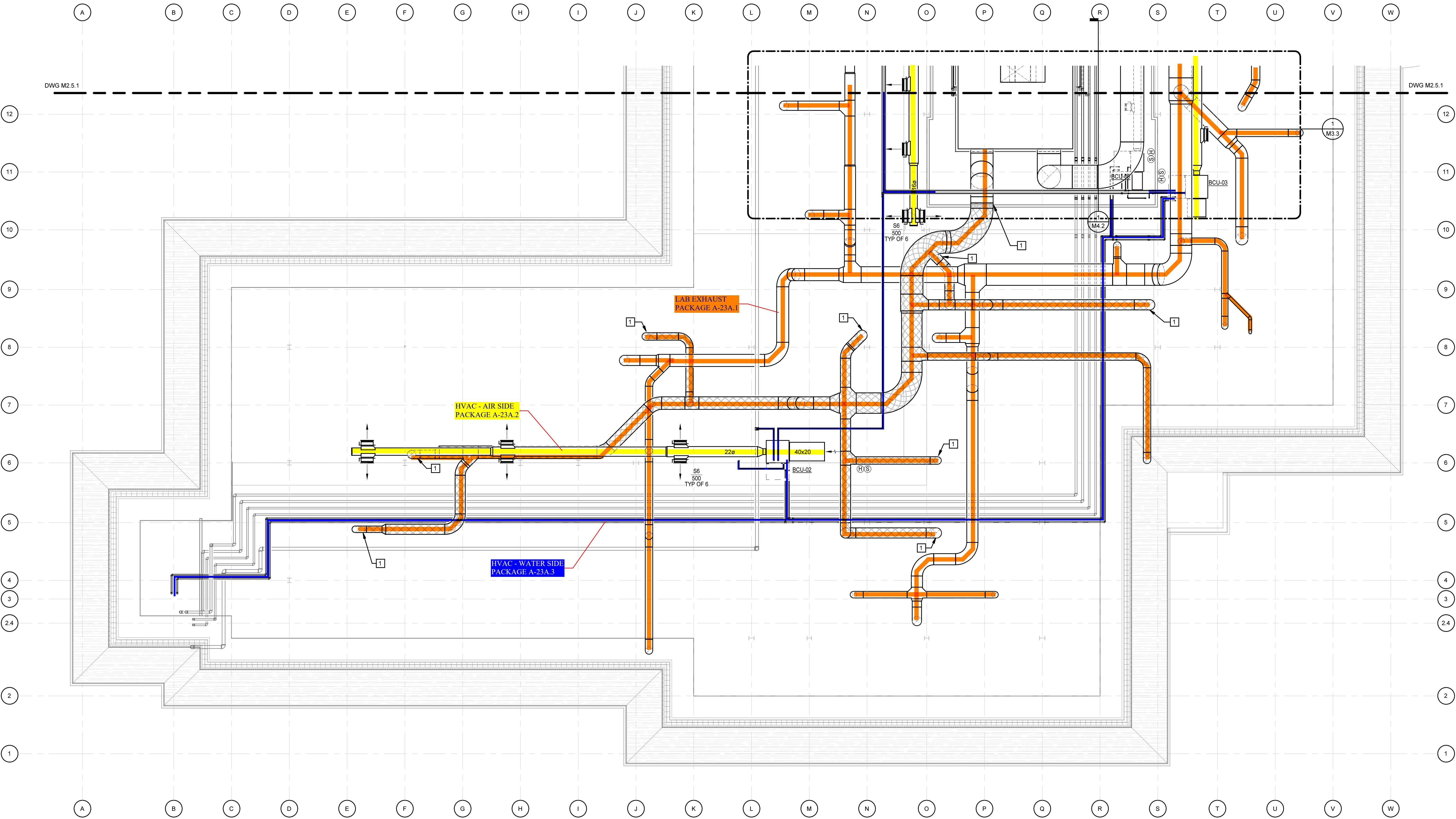


3/25/2019 4:32:55 PM



ATTIC FLOOR PLAN - PART B  
1/8" = 1'-0"

KEYNOTES  
APPLIES TO THIS DRAWING

- 1 DUCT SHALL BE WRAPPED IN 2-HOUR RATED FIRE WRAP THAT IS LISTED FOR CHEMICAL FUME EXHAUST DUCT PROTECTION. REFER TO SECTION 230713. DUCT SHALL BE ENCLOSED FROM THE POINT IT EXITS THE GYPSUM SHAFT ON THE SECOND FLOOR AND ENTERS THE ATTIC TO THE POINT IT ENTERS THE RATED MECHANICAL ROOM. INSTALL IN ACCORDANCE WITH THE INSTALLATION INSTRUCTIONS AND THE LISTING OF THE WRAP MANUFACTURER.

MOSELEYARCHITECTS

811 N. WEST STREET, SUITE 205 RALEIGH, NORTH CAROLINA 27603  
PHONE (919) 843-0691  
MOSELEYARCHITECTS.COM

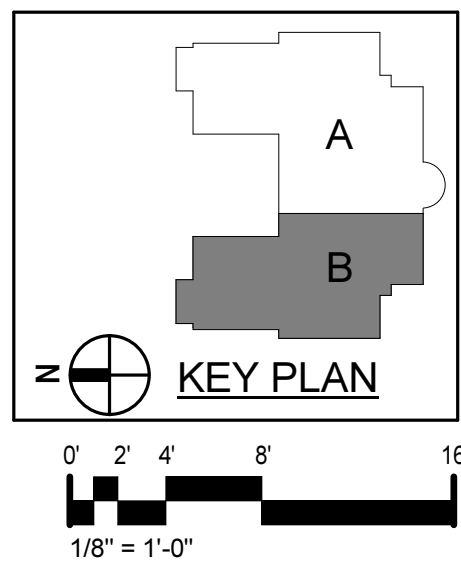


Dobo Hall Renovation - Package A

SCO PROJECT NO. 18-19798-01A  
UNC Wilmington  
4978 CAHILL DR, WILMINGTON, NC 28403

PROJECT NO.	DATE
580999	MARCH 27, 2019
REVISIONS	
DATE	DESCRIPTION

ATTIC FLOOR PLAN  
- PART B



M2.6.1